



PERCENT SPECIFIC LYSIS

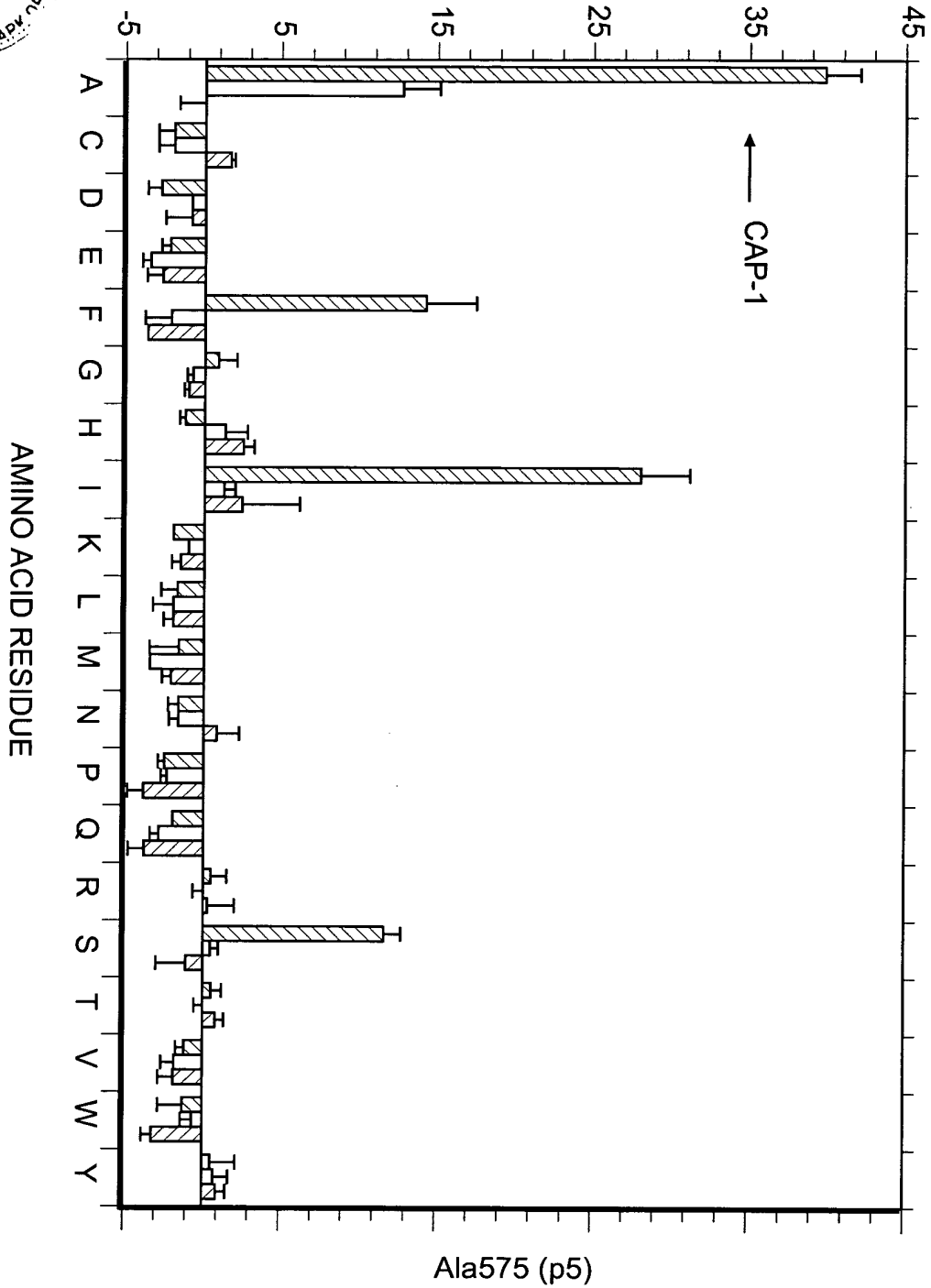


FIG. 1A



PERCENT SPECIFIC LYSIS

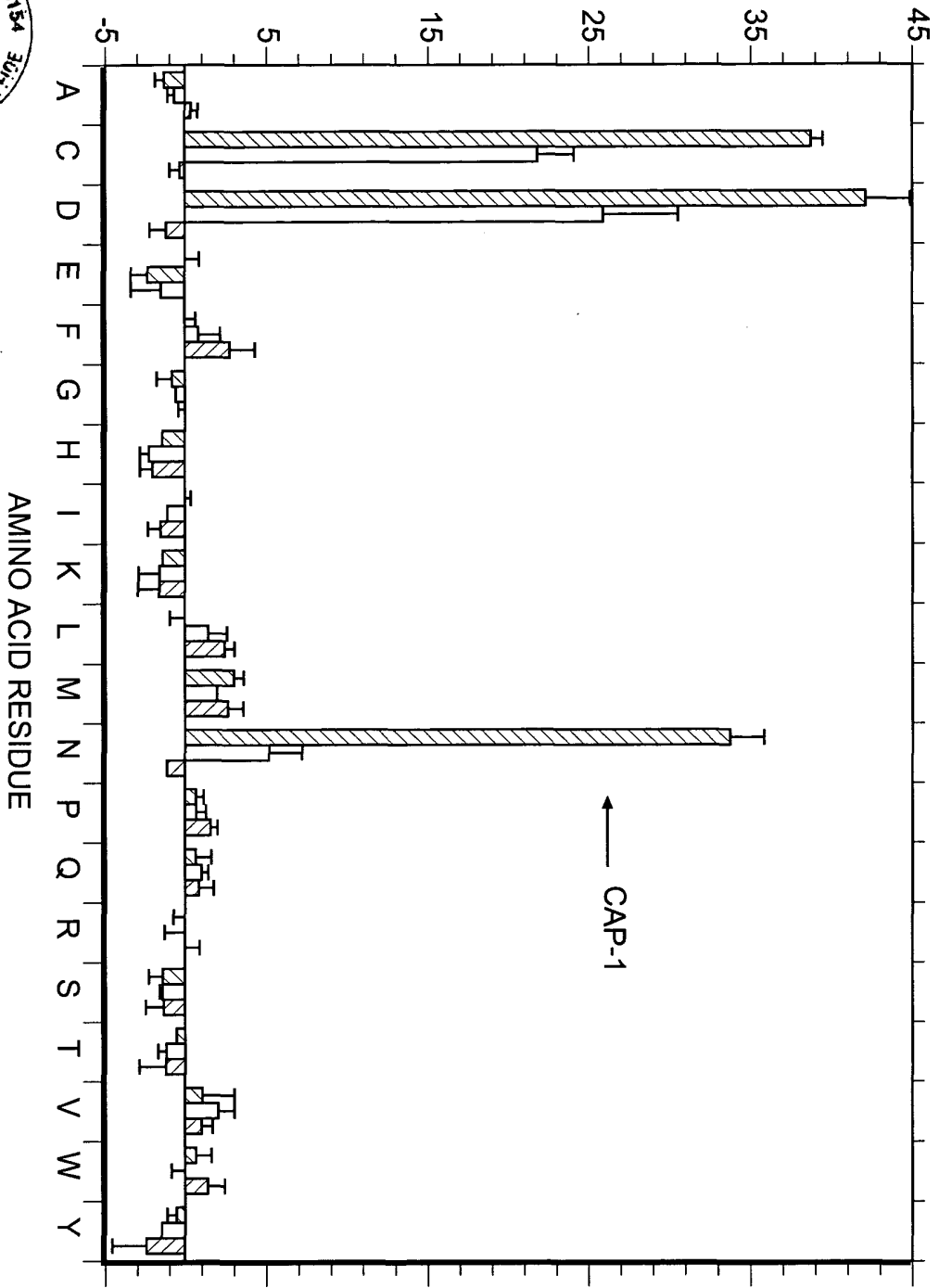


FIG. 1B

Asn576 (p6)

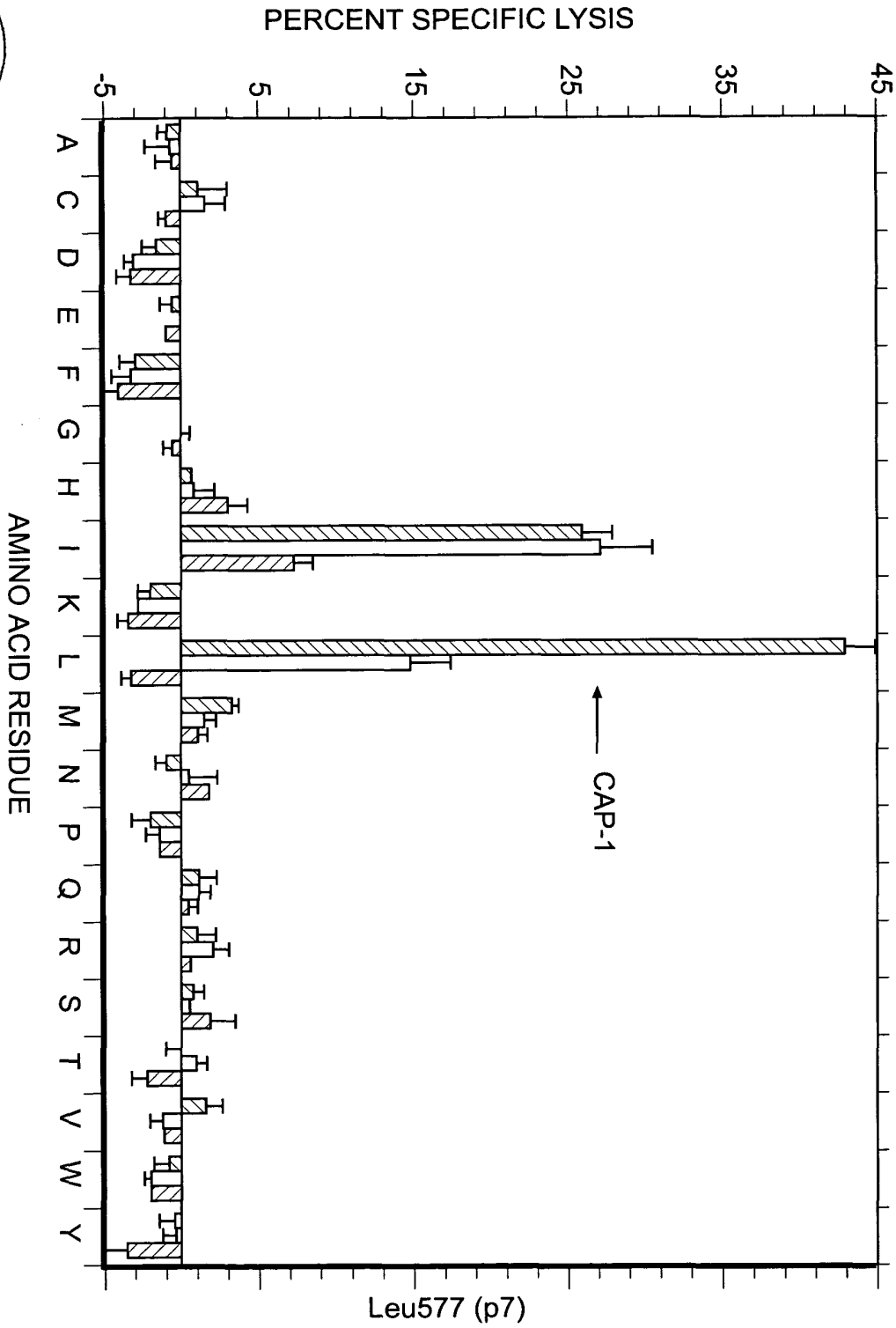


FIG. 1C

PERCENT SPECIFIC LYSIS

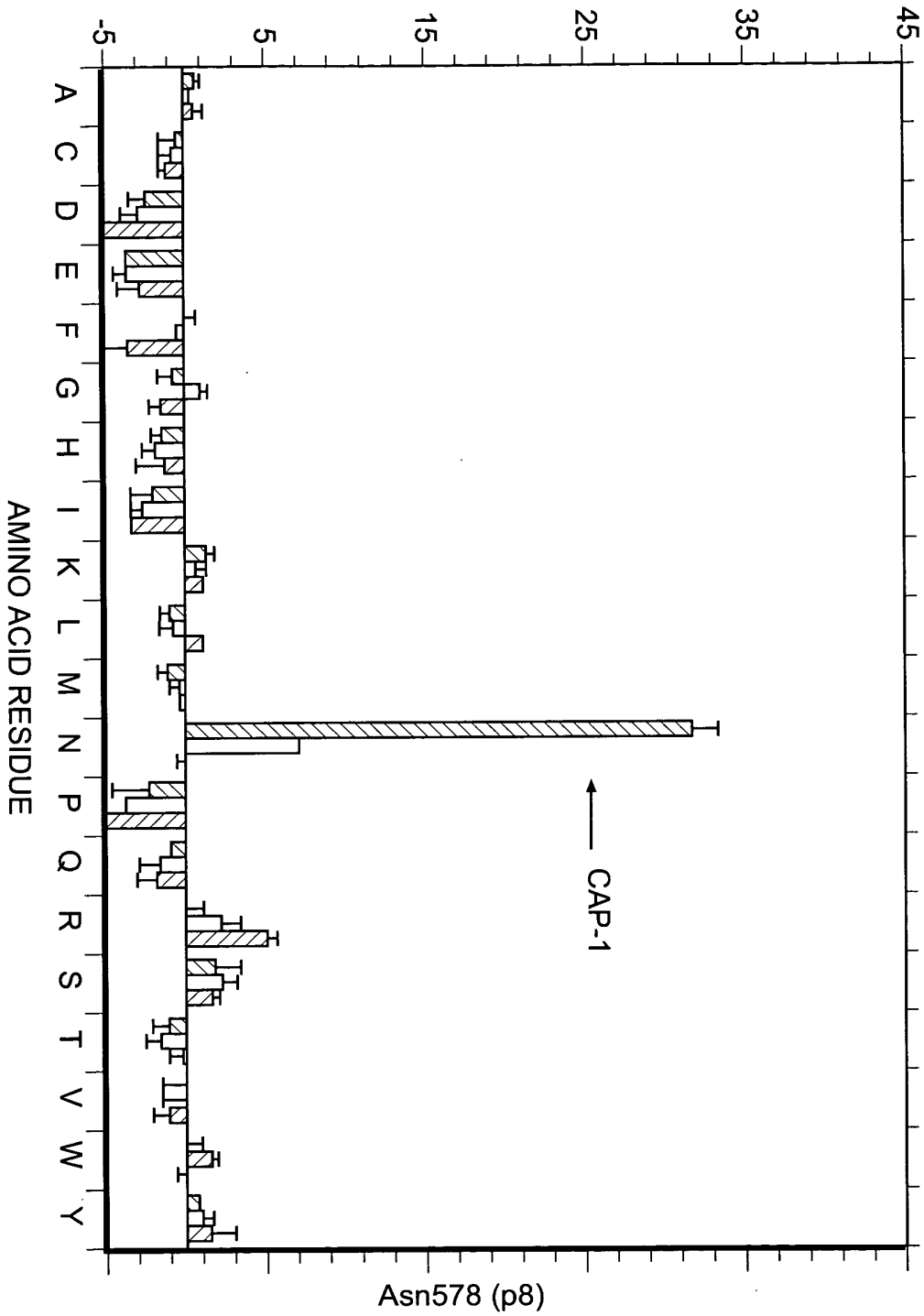


FIG. 1D



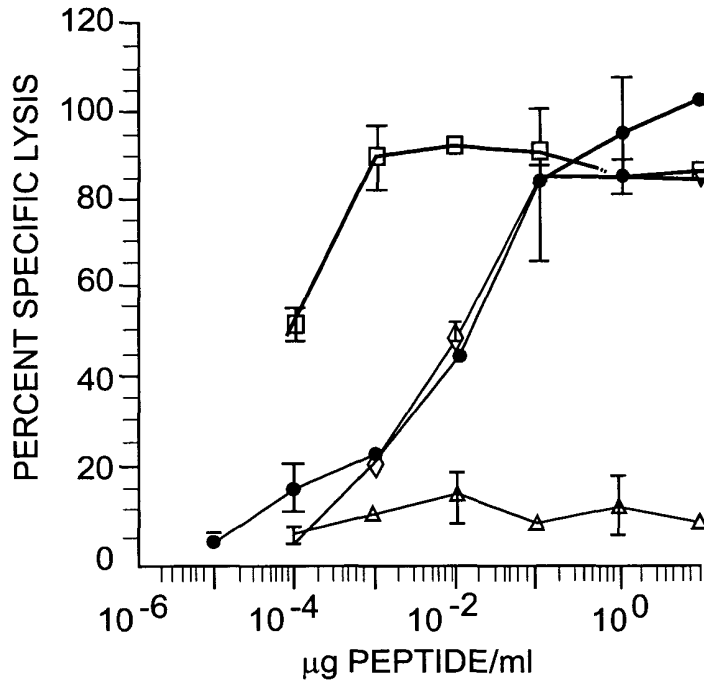


FIG. 2A

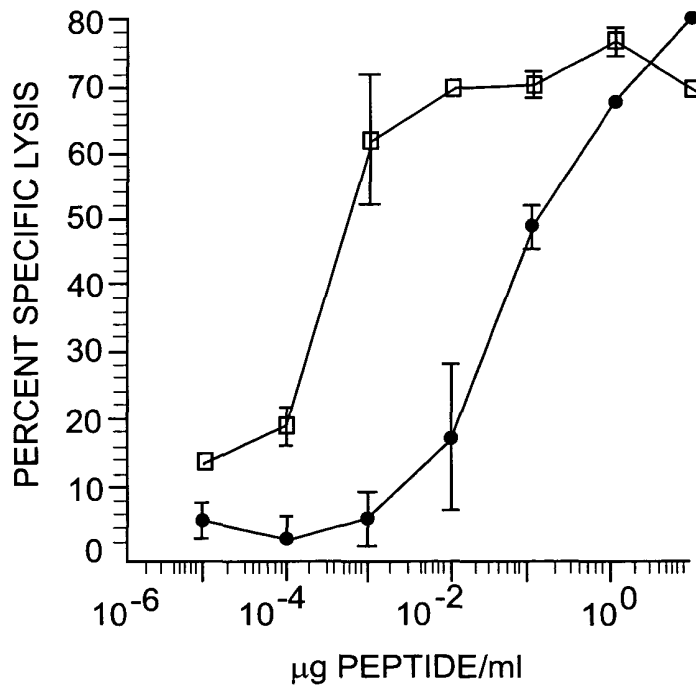


FIG. 2B

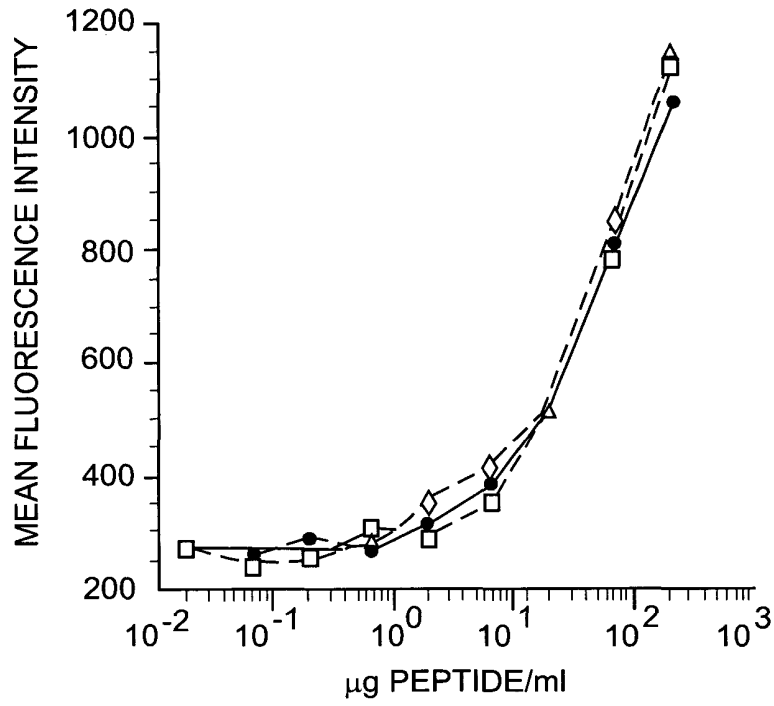


FIG. 3A

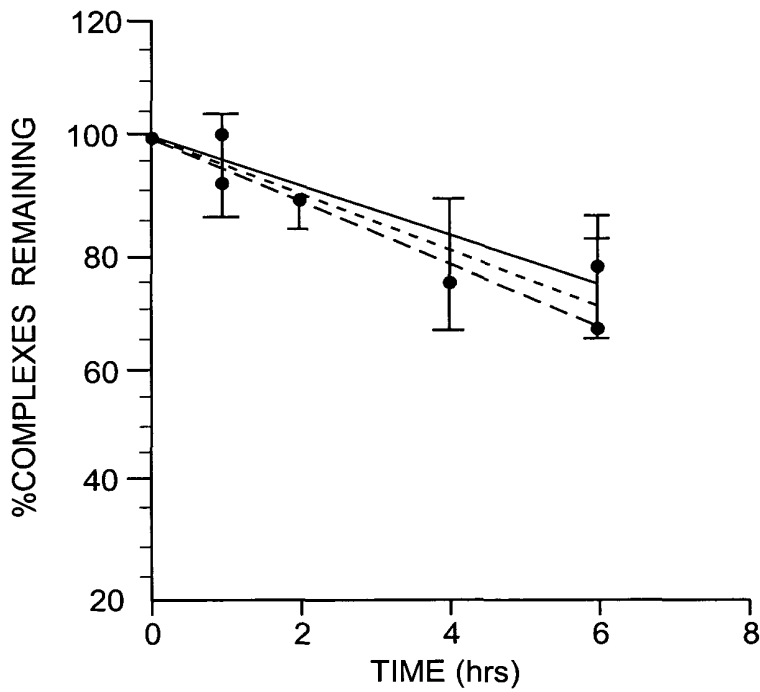


FIG. 3B

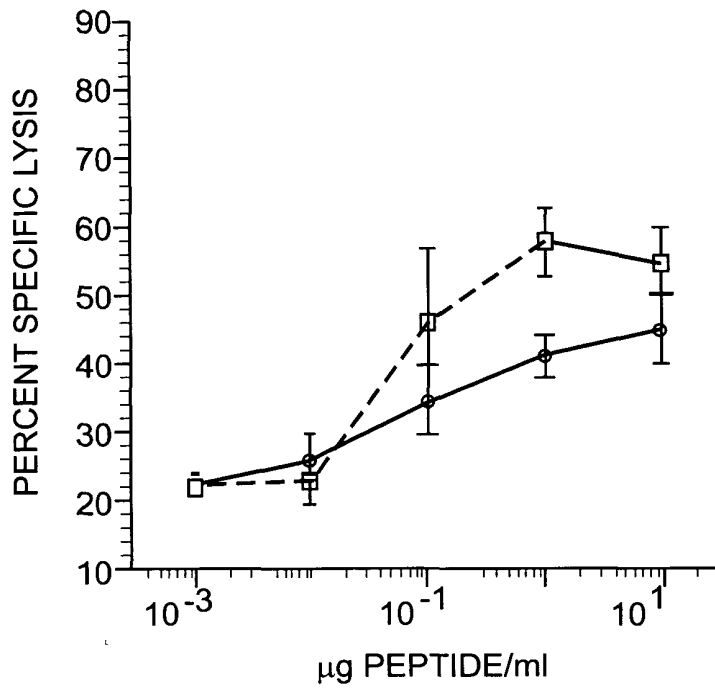


FIG. 4A

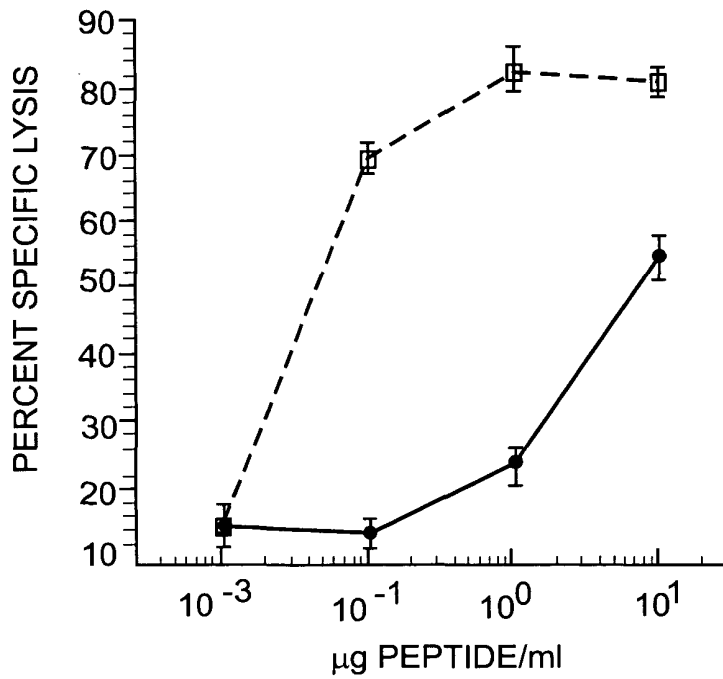


FIG. 4B

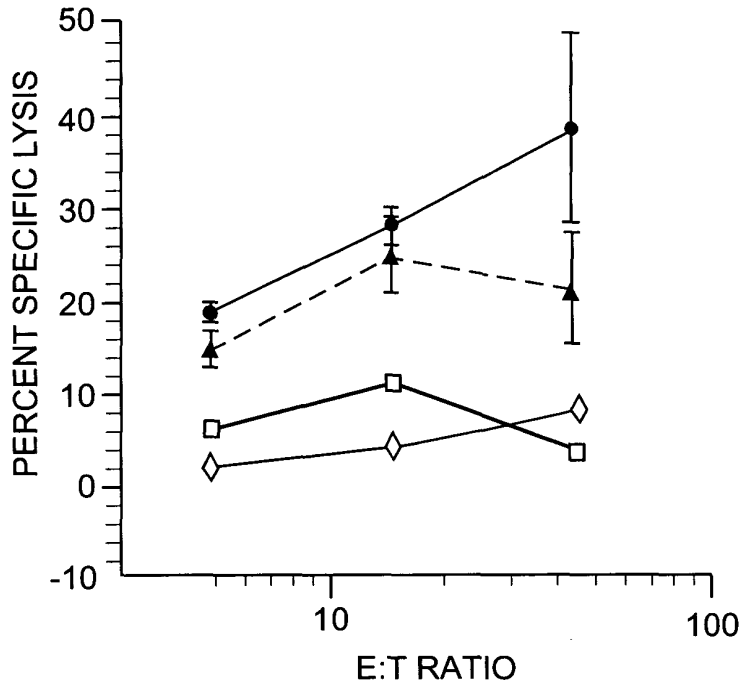


FIG. 5A

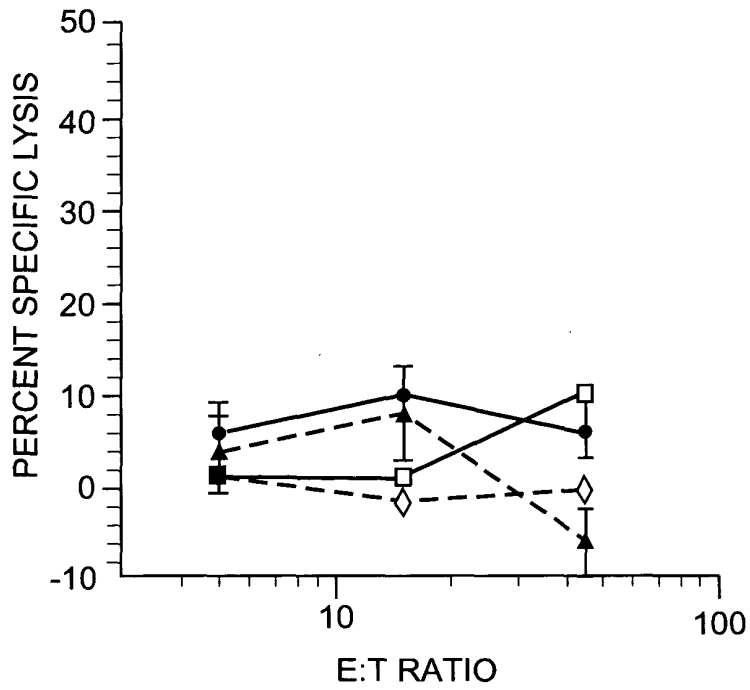


FIG. 5B



Jeffrey SCHLOM et al.
"Agonist and Antagonist Peptides of
Carcinoembryonic Antigen (CEA)
Serial No. 09/529,121

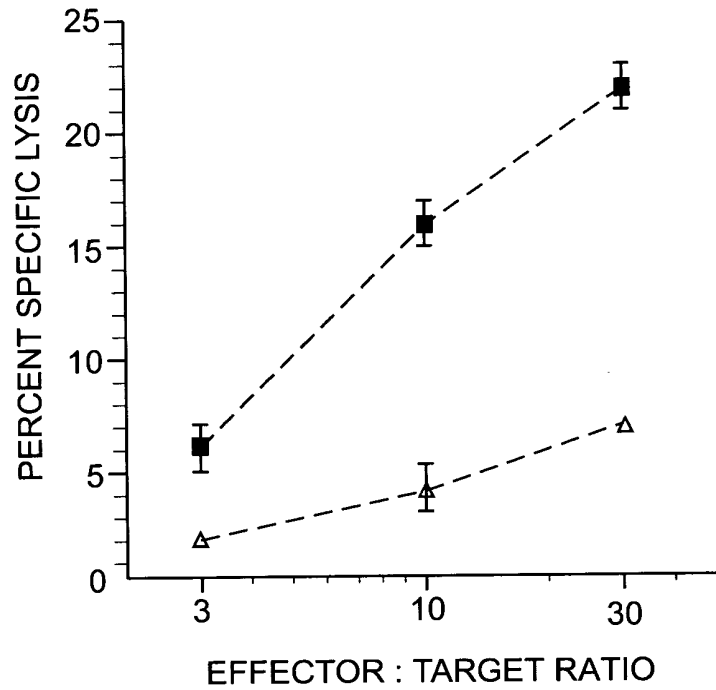


FIG. 6



Jeffrey SCHLOM et al.
"Agonist and Antagonist Peptides of
Carcinoembryonic Antigen (CEA)
Serial No. 09/529,121

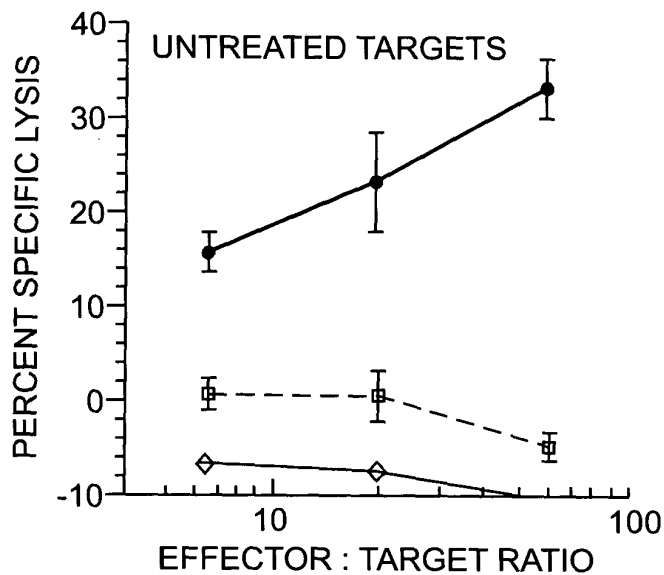


FIG. 7A

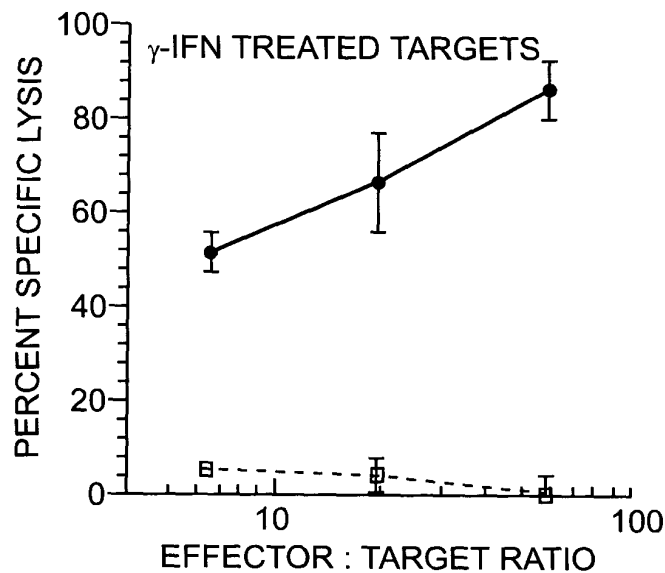


FIG. 7B